



Research Paper

Assessment of the Ameliorative Effects of Aqueous Neem (*Azadirachta Indica*) Leaves Extract on Lead Acetate Induced Neurotoxicity in Cerebellum of Adult Wistar Rats

Fakunle P.B¹, Ehiremen Samuel^{2*}, Atata Roy², Omotosho D.A²,
Taiwo-Ola D.O², Odubela Kayode², Emmanuel C.J³, Folahan O.P²

¹(Ladoke Akintola University of Technology Ogbomoso Oyo State)

²(Olabisi Onabanjo University Ago-Iwoye Ogun State)

³(Olabisi Onabanjo University Teaching Hospital, Sagamu Ogun State)

*Correspondence: Ehiremen Samuel

Department of Anatomy,
Faculty of Basic Medical Sciences,
Olabisi Onabanjo University,
Ago-Iwoye, Ogun State.

Abstract

Lead is a heavy metal that can cause oxidative stress, inflammation, and neuronal damage in the central nervous system, especially in the cerebellum, which is responsible for motor coordination and cognitive function. Neem plant also called *Azadirachta Indica* is a medicinal plant that has antioxidant, anti-inflammatory, and neuroprotective properties according to previous literatures. This study aim to assess the ameliorative effect of aqueous neem leaf extract(*Azadirachta Indica*) on lead acetate induced neurotoxicity in cerebellum of adult wistar rat evaluating body weight, Histology, Lactate Dehydrogenase level, Catalase (CAT) and Superoxide dismutase (SOD) parameter. After a period of 14 days of acclimatization, 20 adult wistar rats weighing(150-200g) were randomly allocated to four groups, group1(distilled water only), group2 Lead only(70mg/kg PO), group3 *A. Indica* extract(200mg/kg PO) and group4 (70mg/kg Lead + 200mg/kg extract of *A. Indica*) The rats were subjected to oral administration of Lead and aqueous seed extract of *Azadirachta Indica* for fourteen consecutive days before sacrifice, the cerebellum was analysed for histopathological and biochemical changes using standard laboratory procedure. Results were expressed as mean \pm standard error of mean (SEM) and analyzed by one-way ANOVA. Differences were considered significant when $P < 0.05$. The results showed that lead acetate caused significant reduction in the SOD and CAT ($P < 0.05$) activity, but in the Lead+ *A. Indica* group there was significant increase in the SOD and CAT activity. Also, in the Lactate dehydrogenase level (LDH) and the relative weight of the cerebellum, there was a significant increase in the lead only group ($P < 0.05$), which across the remaining treatment group, there was a significant decrease. The histology of the cerebellum, shows severe degeneration and hyperplasia of the glia cells in the lead induced group while in the group induced and treated with Lead+ *A. Indica* shows regeneration of the cerebellum tissue. The study concluded that aqueous Neem leaf has potential therapeutic benefits against lead acetate-induced neurotoxicity in the cerebellum by enhancing the antioxidant defence system, reducing the inflammatory response.

Key Word: Lead, Cerebellum, Neem Leaf, Neurotoxicity

Received 09 Feb., 2024; Revised 22 Feb., 2024; Accepted 24 Feb., 2024 © The author(s) 2024.

Published with open access at www.questjournals.org

I. INTRODUCTION

Through the improvement of antioxidant activity, suppression of bacterial growth, and modification of genetic pathways, plant products or natural products demonstrate an essential role in the prevention and treatment of diseases (42). Due to their low side effects and accessible qualities, several plants are still being eagerly explored for their potential medicinal roles in the management of diseases. It is common knowledge that allopathic medications cost a lot of money and have detrimental effects on healthy tissues and a variety of

biological processes. The fact that many pharmacologically effective medications come from natural resources, including medicinal plants, is widely acknowledged (42, 6).

Native to the arid parts of Asia and Africa, *Azadirachta Indica* (Neem) is a subtropical tree(28,1). Neem (*Azadirachta Indica*) has a long history of usage as a pesticide, fungicide, and contraceptive in India and Africa. Almost every component of the tree, including the seeds, leaves, roots, bark, trunk, and branches, has a variety of applications(19). Neem is known as a "Pharmaceutical Wonder" because it is thought to be a repository of several medicinal compounds. Neem has more than 300 phytochemicals that are diverse chemically and physically. Glycoproteins, triterpenes, limonoids, flavonoids, phenols, tannins, nimbins, saponins, catechins, azadirachtin, and gallic acid are the main phytochemicals found in neem(6,8). The anti-oxidant, anti-inflammatory, anti-cancer, anti-diabetic, neuroprotective, and cardioprotective properties of the golden plant have all been demonstrated in various disease models (39,29,30). Neem exerts its potential beneficial effects by modulating different cellular and molecular mechanisms like free radical scavenging(11), xenobiotic detoxification(29), DNA repair(3,29), cell cycle modulation(3,29) programmed cell death(36,41) and autophagy(41), immune surveillance, signaling pathways conferring anti-inflammatory(27,26), anti-angiogenic and anti-metastatic activities(3,29),. Neem also has anti-feedant, insecticide, antimicrobial, larvicidal, antibacterial, antiviral, and spermicidal(38) actions. Neem is known to possess anti-plasmodial activity thereby conferring it anti-malarial effects. It is also used to treat diseases like cancer, diabetes, atherosclerosis, small pox, leprosy, urinary tract diseases, infections, hypertension(10,18)

The posterior cranial fossa is home to the cerebellum, which is a component of the hindbrain. It is a portion of the medulla oblongata and pons and is connected to the brain stem by three cerebellar peduncles. It is separated from two structures by the fourth ventricle's cavity. It is made up of two laterally massive hemispheres connected at the midline by vermis. The only structures that come out of the cerebellum are the deep nuclei of the cerebellum(25)

Cerebellar cortex, a highly tangled sheet of tissue that houses nearly all the neurons in the cerebellum, surrounds these nuclei. The complex arrangement of folds and fissures that defines the cerebellar cortex can be seen in a cross section through the cerebellum. There are three layers in the cerebellar cortex, The molecular layer is the outer- most layer and is largely a synaptic layer, containing the connections of a number of neurons (e.g., basket and stellate cells) with the dense dendritic arborizations, the Purkinje cells, whose cell bodies are the predominant component of the Purkinje cell layer. The innermost layer of the cortex is the granule cell layer containing Golgi cells, Lugaro cells, unipolar brush cells, and the highly abundant granule cells. Almost all of the neurons of the cerebellar cortex use either the excitatory neurotransmitter glutamate or the inhibitory neurotransmitter gamma-aminobutyric acid(35).

The cerebellum receives information from the spinal cord, and other part of the brain and then regulates motor movement. The cerebellum coordinates voluntary movement such as posture, balance, coordination and speech, resulting in smooth and balanced muscular activity. Damage to the cerebellum can lead to loss of coordination of motor movement, inability to judge distance and when to stop(dysmetria), the inability to perform rapid alternating movements(adiadochokinesia), movement tremors, staggering, wide based walking known as ataxic gait(35).

Many heavy metals, including Pb, are known to induce over production of reactive oxygen species (ROS) and consequently enhance lipid peroxidation, decrease the saturated fatty acids and increase the unsaturated fatty acid contents of membranes(21). Also, it has been shown to enhance the production of ROS in a variety of cells resulting oxidative stress(40). ROS are the byproducts of many degenerative reactions in many tissues, which will affect the regular metabolism by damaging the cellular components(9). Extensive study on oxidative stress has demonstrated that exposure of cells to adverse environmental conditions can induce the over production of ROS, such as superoxide radical (O⁻), H₂O and hydroxyl radical (OH⁺) in plant cells. In addition, ROS are highly reactive to membrane lipids, protein and DNA. They are believed to be the major contributing factors to stress injuries and to cause rapid cellular damage(7).

II. Material and Methodology

Materials

The following were used during the time frame of the research: Forty (40) Male Wistar Rats, pelleted rat feed, plastic cages, gloves, water bottles, bowls for feed, Aqueous *Azadirachta Indica*, capillary tubes, plain bottles, syringe, Cotton wool, weighing scale, titrating pipettes, oral cannulas, beakers, measuring cylinder, spatula, burette, conical flask, light microscope, spectrophotometer, glass slide, dissecting set, dissecting board, gloves, centrifuge, freezer, pipette, micropipettes tips.

Drugs and Chemicals

Lead acetate (Merck Germany), phosphate buffer (pH 7.4, 0.1 M) (Oxford laboratories, Mumbai India), bluing solution, glacial acetic acid, hydrochloric acid (HCl), Haematoxylin and eosin staining, ellman reagent,

glutathion acid, thiobarbituric acid, carbonate buffer (Oxford laboratories, Mumbai India), Distilled water, aderenaline, Dichromate/acetic acid solution, Hydrogen peroxide, potassium hepaxodichromate, all other chemical and reagent used in this study was of analytical grade

Animal Husbandry and Experimental Design

Animal experiments were conducted in animal house of the Obafemi Awolowo College of Health Sciences, Olabisi Onabanjo University, Sagamu campus, Ogun State, Nigeria. Forty adult male Wistar rats (150 ± 50 g) were used in this study. Rats were housed under a standard laboratory condition and a 12/12^h light/dark cycle. Rats had free access to taped water and a standard laboratory diet. All the animal experiments and protocol were maintained according to the rules and regulations of National Institute of Health (NIH, (2011) for laboratory animal care and use. All the animal carcasses were buried deep in the ground covered with lime and disinfectant at least two feet beneath the natural surface and covered with soil. The study protocol was conducted for fourteen days. Animals were randomly and equally divided into four groups of ten animals after a fourteen day acclimatization as follows:

- a. Group A: Control group receive physiological saline (0.9% w/v NaCl, p.o) at the same volume of other groups daily throughout the experiment
- b. Group B: received daily administration of lead acetate (70 mg/kg b.w/day, p.o) daily throughout the experiment (Lead only)
- c. Group C: received daily administration of the aqueous extract of *Azadirachta Indica* leaf extract (200 mg/kg b./day, p.o.) daily throughout the experiment (*A. Indica* only)
- d. Group D: received daily administration of lead acetate (70 mg/kg b.w/day, p.o) and aqueous extract of *Azadirachta Indica* leaf extract (200 mg/kg b./day, p.o.) daily throughout the experiment (Lead + *A. Indica*)

Preparation of the aqueous leaf extract of *Azadirachta Indica*

The aqueous extract of *Azadirachta Indica* leaf was prepared by drying the *Azadirachta Indica* leaf at room temperature for two (2) months and was grinded to fine particles, after which 500 g of the powder was macerated in one litre of distilled water for 24 hours. The mixture was then filtered and the filtrate was concentrated using rotary evaporator at 60°C. The concentrated filtrate was collected in a bottle and kept at room temperature before usage. The concentrate was reconstituted in distilled water to prepare the dose of *Azadirachta Indica* used in the study.

Preparation and administration of lead acetate

10 g of lead acetate was dissolved in 100 ml of saline water. 70 mg/kg dose(13) of lead acetate was obtained from the stock solution according to the method described by (8)

Animal sacrifice and determination of organ weight

The animals was sacrificed by cervical dislocation 6 hours after the expiration of research. The head was detached from the body and the cerebellum weight was determined per 100 gram body weight using a weighing scale

Procedure for blood collection

Blood was collected from the retro orbital sinus under mild ether anesthesia, the rat was restrained, the neck gently scuffed and the eye made to bulge. A capillary tube was inserted dorsally in to the eye and blood was allowed to flow by capillary action through the capillary tube into sample bottle.

Determination of catalase activity

Tissue catalase activity was determined according to the method of Sinha (1972). The principle is based on the fact that dichromate in acetic acid is reduced to chromic acetate when heated in the presence of H₂O₂ with the formation of perchromic acid as an unfigureintermediate. The chromic acetate then produced in measured colorimetrically at 570 - 610 nm. Since dichromate has no absorbance in this region, the presence of this compound in the assay mixture does not interfere at all with the colorimetric determination of chromic acetate. The catalase preparation is allowed to split H₂O₂ for different periods of time. The reaction was stopped at a particular time by the addition of dichromate acetic acid mixture and the remaining H₂O₂ is determines by measuring chromic acetate colorimetrically after heating the reaction.

Procedure: 0.1 ml of homogenate was mixed with 1.0 ml of 0.01M phosphate buffer (pH 7.4), and incubated with 0.4 ml of 0.2M H₂O₂ at 37°C accurately for 1.0 min and reaction was stopped with 2.0 ml of 5% potassium dichromate (1:3 with glacial acetic acid). Further the samples were incubated in boiling water bath for 15 min and centrifuged at 5000 rpm for 15 min and supernatant was used to quantify the amount of H₂O₂ to calculate catalase activity at 570 nm. One unit represents 1.0 μ mole of H₂O₂ consumed/min/mg protein.

Determination of superoxide dismutase (SOD) activity

SOD activity in the brain were determined by the method of (24). Principle: The ability of superoxide dismutase to inhibit the auto-oxidation of epinephrine at pH 10.2 makes this reaction a basis for a simple assay of this enzyme. Superoxide anion generated by xanthine oxidase reaction caused the oxidation of epinephrine to adrenochrome produced per superoxide anion introduced increasing the concentration of epinephrine. The result led to the proposal that auto-oxidation of epinephrine proceeds by at least two distinct pathways where only one of them is a free radical chain reaction involving superoxide radical and hence can be inhibited by superoxide dismutase.

The homogenates were diluted with distilled water in ratio 1:9. An aliquot of 0.2 ml of the diluted sample was added to the 2.5 ml of 0.05M carbonate buffer, pH 10.2 to equilibrate in the spectrophotometer cuvette and the reaction started by adding 0.3 ml freshly prepared 0.03 mM epinephrine to the mixture which was quickly mixed by inversion. The reference cuvette contained 2.5 ml of carbonate buffer, 0.3 ml of substrate (adrenaline) and 0.2 ml of distilled water. The increase in absorbance at 480 nm was monitored every 30 sec for 150 sec.

Calculation

$$\text{Increase in absorbance per minute} = \frac{A_3 - A_0}{2.5}$$

Where A_0 = absorbance after 30 sec

A_3 = absorbance after 150 sec

$$\% \text{ inhibition} = 100 - 100 \times \frac{\text{Increase in absorbance of substrate}}{\text{Increase in absorbance of blank}}$$

1 unit of SOD activity was given as the amount of SOD necessary to cause 50% inhibition of the oxidation of adrenaline to adrenochrome in 1 min.

$$\text{Unit of SOD activity} = \frac{\% \text{ inhibition}}{50}$$

Histological Studies

After careful removal of organs, they were trimmed of fat. They were weighed and immediately fixed in 10% formal saline. After fixing the tissues, they were put into ascending grades of alcohol and then cleared in xylene. They were embedded in paraffin and serial sections of 5 μ m were obtained. Sections were stained with hematoxylin and eosin and cresyl violet staining technique. The slides were viewed under light microscope (CELESTRON LCD DIGITAL MICROSCOPE, MODEL 44348) and photomicrographs were taken (400 \times).

Statistical Analysis

All the values are expressed as mean \pm standard error of mean (SEM). Analysis of data was done using GraphPad Prism version 5 for Windows. Differences between groups were analyzed by one-way ANOVA followed by Student's Newman-Keuls post-hoc test. Differences were considered significant when $P < 0.05$.

III. Results

Ameliorative activity of *Azadirachta Indica* aqueous leaf extract against lead acetate induced oxidative stress in the cerebellum of adult male wistar rats

The figure 1 presents the results of the evaluation of the ameliorative activity of *Azadirachta Indica* (neem) aqueous leaf extract against lead acetate-induced oxidative stress in the cerebellum of adult male Wistar rats. The measurements include catalase (CAT) activity in μ mole/ml and superoxide dismutase (SOD) activity in μ /mg. In the cerebellum, lead exposure significantly reduced CAT and SOD activities compared to the control group (indicated by letter 'a'). Treatment with *A. Indica* extract alone or in combination with lead restored these activities, with the combination showing a significant increase compared to lead only group (indicated by letter 'b'). Overall, the results suggest that *Azadirachta Indica* extract has ameliorative effects against lead-induced oxidative stress in the examined brain regions.

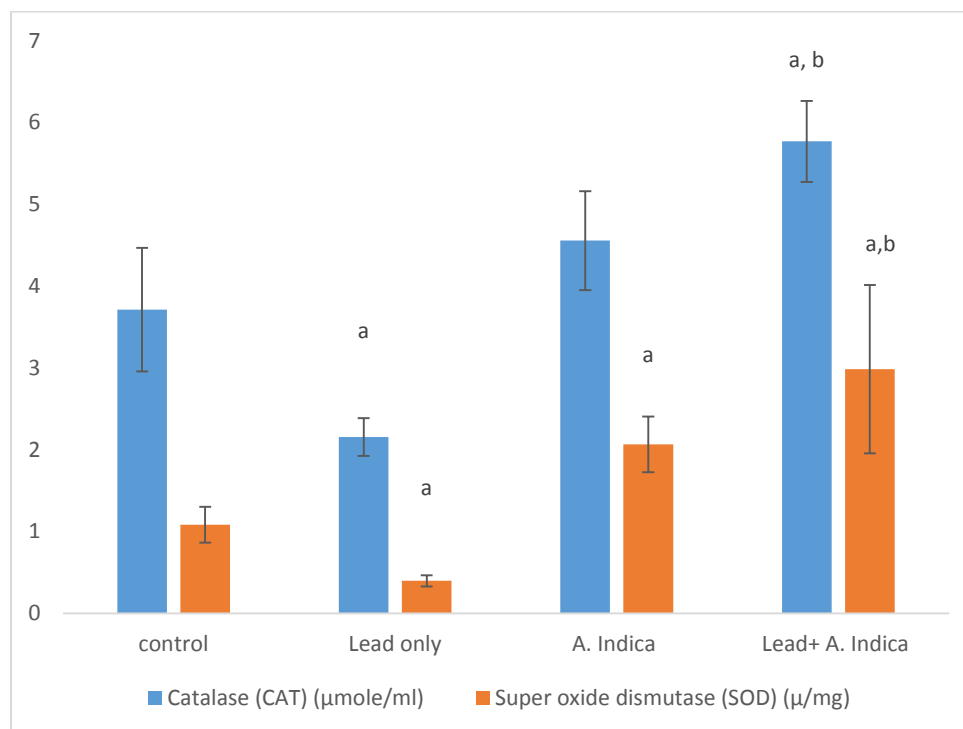


Figure 1. Ameliorative activity of *Azadirachta Indica* aqueous leaf extract against lead acetate induced oxidative stress in the cerebellum of adult male wistar rats. Each bar is an expression of mean \pm SEM. ($P < 0.05$) ^A - Values were significant when compared to the control group, ^B - Values were significant when compared to the lead only group, ^C - Values were significant when compared to the *A. Indica* group

Ameliorative activity of *Azadirachta Indica* aqueous leaf extract against lead acetate induced pathological changes in the Lactate dehydrogenase level (LDH) of adult male wistar rats

The figure 2. Presents data on the ameliorative activity of *Azadirachta Indica* (neem) aqueous leaf extract against lead acetate-induced pathological changes in the lactate dehydrogenase (LDH) levels of adult male Wistar rats. LDH levels in the lead-only group were significantly elevated compared to the control group, as indicated by the letter 'a'. This suggests that lead acetate exposure led to an increase in LDH activity, indicating pathological changes. Treatment with *Azadirachta Indica* extract alone (*A. Indica*) significantly reduced LDH levels compared to the lead-only group (indicated by letter 'a'). This implies that *A. Indica* has an ameliorative effect, preventing or reversing the lead-induced increase in LDH activity. When *Azadirachta Indica* extract was administered in combination with lead (Lead + *A. Indica*), LDH levels were significantly reduced compared to the lead-only group (indicated by letter 'b'). This suggests a synergistic effect, indicating that the extract may have a protective influence against lead-induced pathological changes in LDH levels.

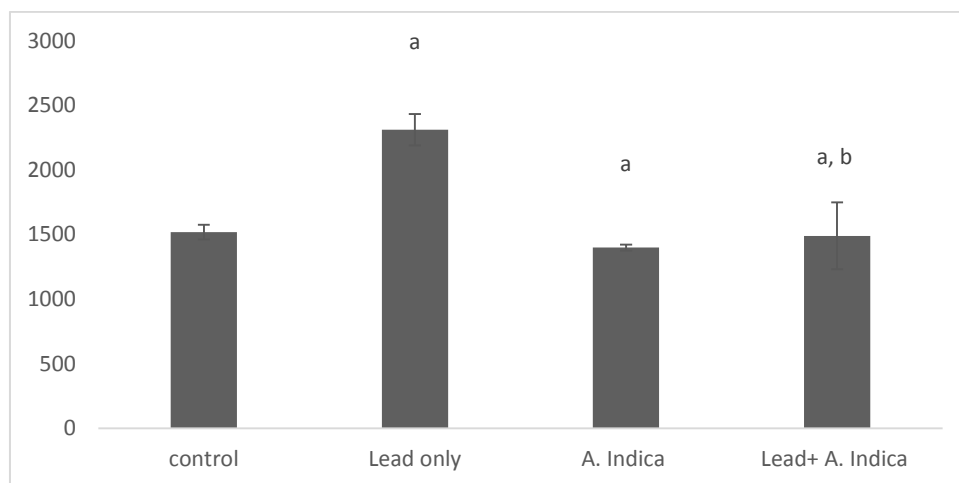


Figure 2. Ameliorative activity of *Azadirachta Indica* aqueous leaf extract against lead acetate induced pathological changes in the Lactate dehydrogenase level (LDH) of adult male wistar. Each bar is an expression of mean \pm SEM. ($P < 0.05$) ^A - Values were significant when compared to the control group, ^B - Values were significant when compared to the lead only group, ^C - Values were significant when compared to the *A. Indica* group

Ameliorative activity of *Azadirachta Indica* aqueous leaf extract against lead acetate induced pathological changes in the relative weight in the cerebellum of adult male wistar rats

Figure 3. Provides data on the ameliorative activity of *Azadirachta Indica* (neem) aqueous leaf extract against lead acetate-induced pathological changes in the relative weight of the cerebellum in adult male Wistar rats. The relative weight of the cerebellum in the lead-only group is significantly increase compared to the control group (indicated by letter 'a'). This increase suggests that lead exposure has led to pathological changes affecting the weight of the cerebellum. Treatment with *A. Indica* extract, either alone or in combination with lead, results in a lower relative weight of the cerebellum compared to the lead-only group. The combination of lead and *A. Indica* extract shows a significant reduction compared to the lead-only group (indicated by letter 'b').

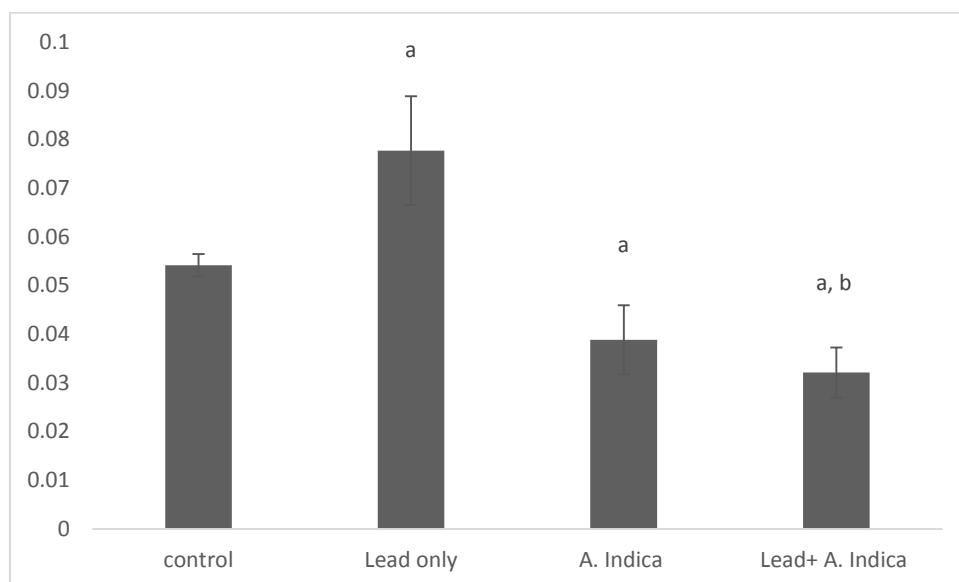


Figure 3. Ameliorative activity of *Azadirachta Indica* aqueous leaf extract against lead acetate induced pathological changes in the relative weight in the cerebellum of adult male wistar rats Each value is an expression of mean \pm SEM. ($P < 0.05$) ^A - Values were significant when compared to the control group, ^B - Values were significant when compared to the lead only group, ^C - Values were significant when compared to the *A. Indica* group

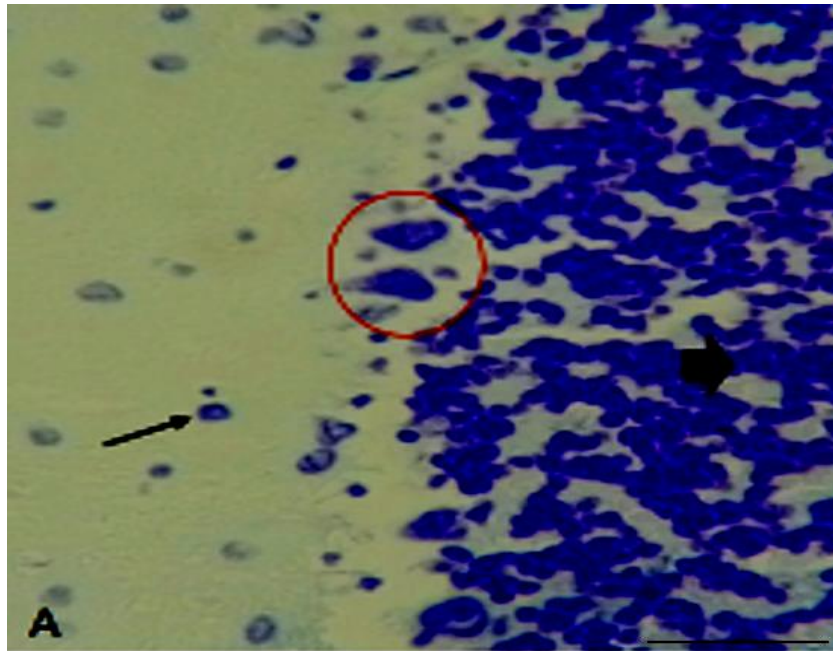


Plate 1: Control group showing well differentiated and organized cerebellum pyramidal cells (red circle) on the Purkinje layer, granular layer (black thick arrow) and neuronal cells (black thin arrow) on the molecular layer. (Cresyl Violet) Magnification: $\times 400$, Scale Bar = $120\mu\text{m}$

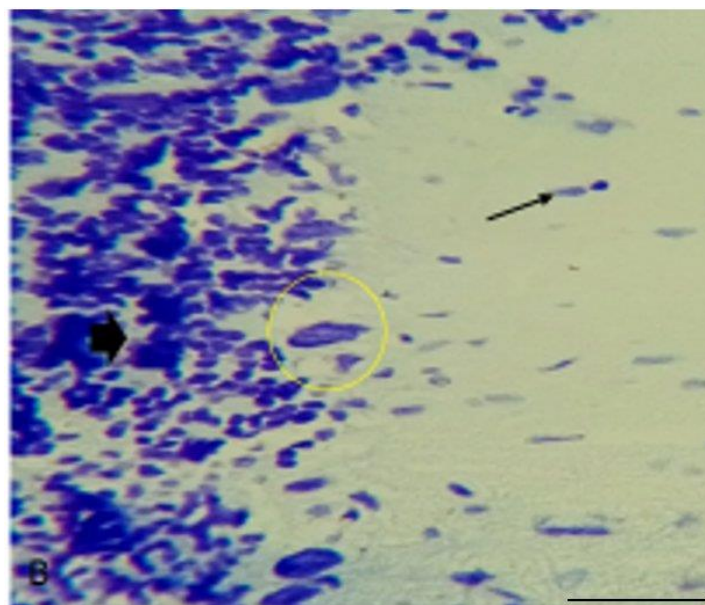


Plate 2: The lead acetate only treatment group cerebellum tissue shows severe degeneration and hyperplasia of the glia cells (black thick arrow) on the granular layer, scanty and pyknotic pyramidal cells (yellow circle) on the Purkinje layer, and neuronal cells (black thin arrow) on the molecular layer. (Cresyl Violet) Magnification: $\times 400$, Scale Bar = $120\mu\text{m}$

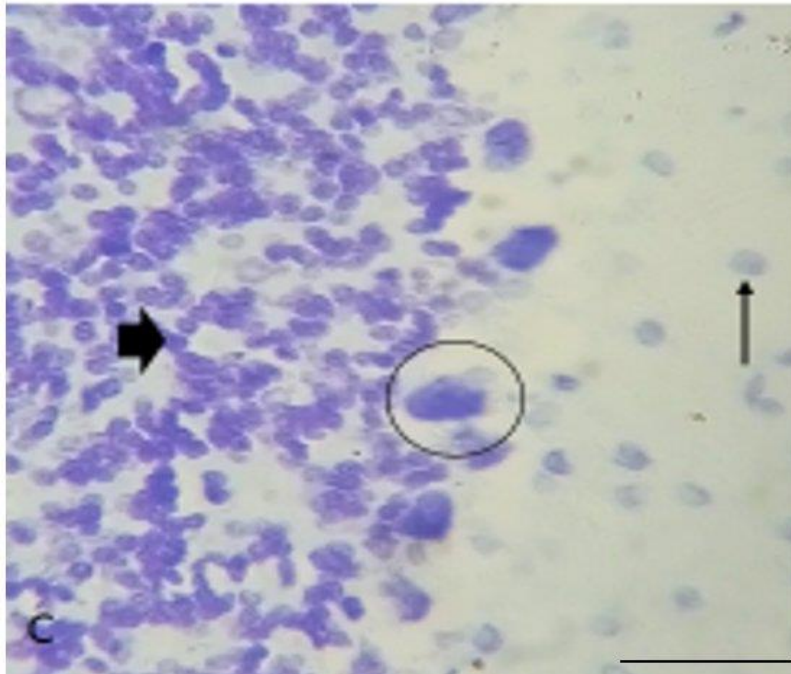


Plate 3: *A. Indica* only treatment group cerebellum tissue shows differentiated pyramidal cells(black circle) on the purkinje layer, glia cells(black thick arrow) on the granular layer and neuronal cells on the molecular layer(black thin arrow). (Cresyl Violet) Magnification: $\times 400$, Scale Bar = $120\mu\text{m}$

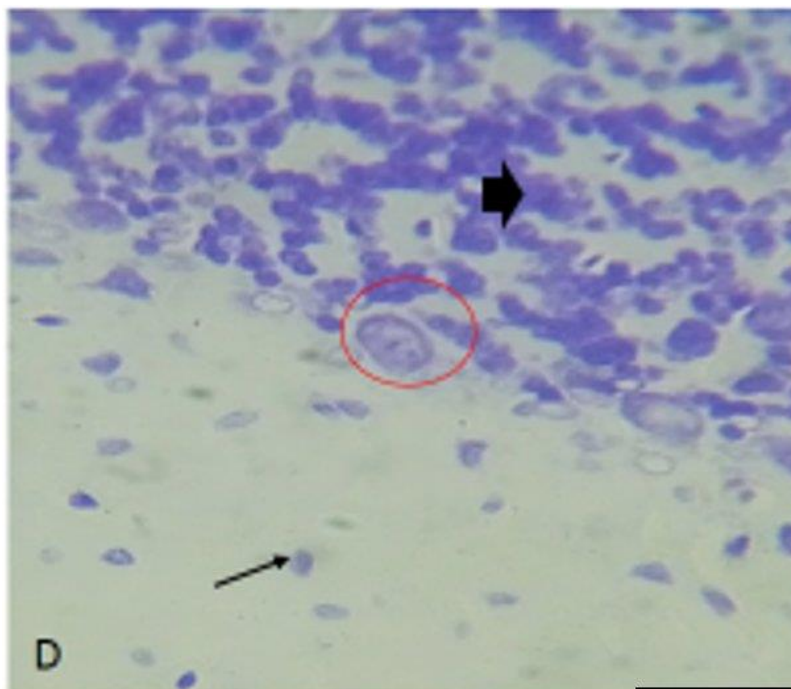


Plate 4: induced and treated with lead acetate and *A. Indica* shows regenerated cerebellum tissue with scanty pyramidal cells(red circle), well distributed glia cells on the granular layer(black thick arrow), and neuronal cells(black thin arrow). (Cresyl Violet,) Magnification: $\times 400$, Scale Bar = $120\mu\text{m}$

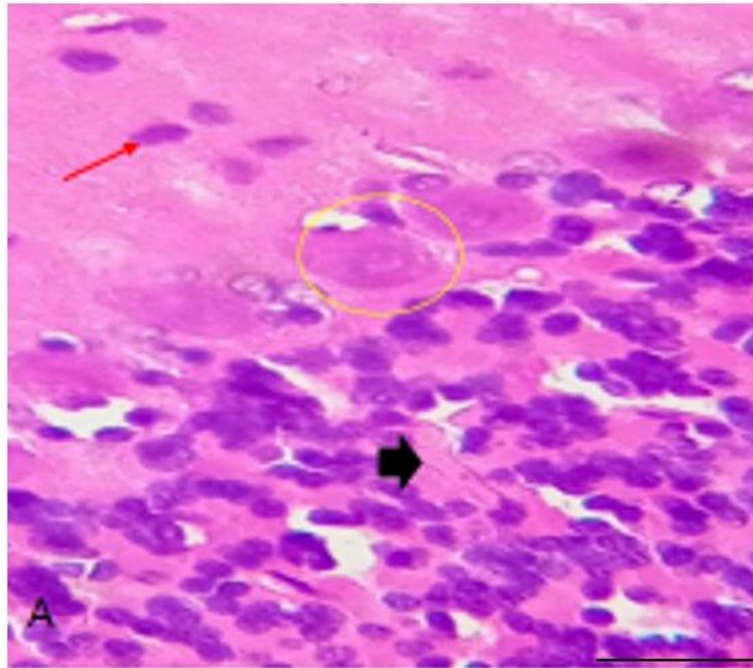


Plate 5: Control group showing well differentiated and organized pyramidal cells(yellow circle) on the Purkinje layer, granular layer(black thick arrow) and neuronal cells (red thin arrow) on the molecular layer. Staining techniques: hematoxylin and eosin, Magnification: $\times 400$, Scale Bar = $120\mu\text{m}$

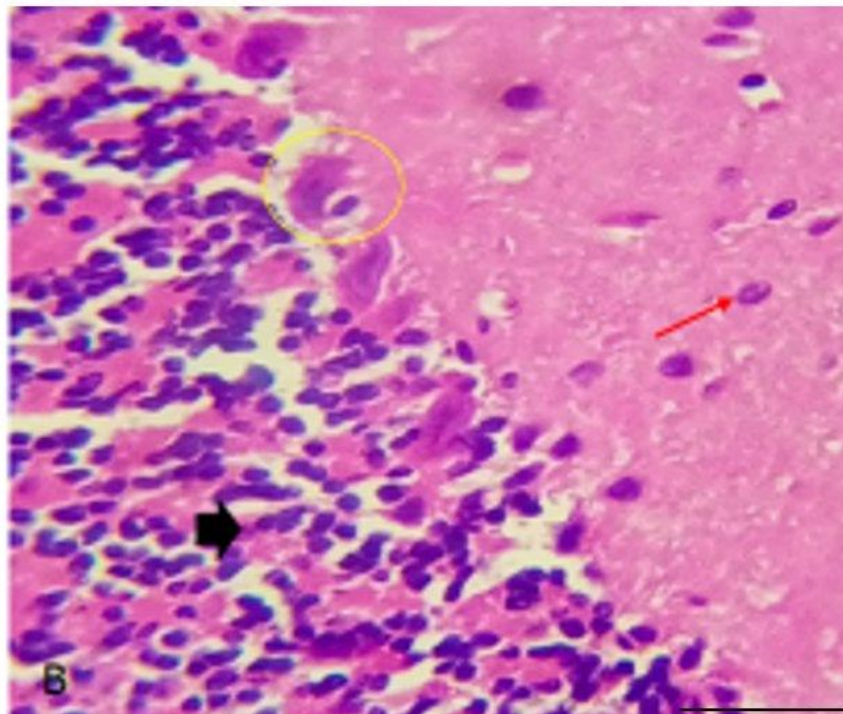


Plate 6: Induced with lead acetate only shows degeneration and hyperplasia of the glia cells(black thick arrow) on the granular layer, vacuolated and pyknotic pyramidal cells(yellow circle) on the Purkinje layer, and neuronal cells(red thin arrow) on the molecular layer. Staining techniques: hematoxylin and eosin, Magnification: $\times 400$, Scale Bar = $120\mu\text{m}$

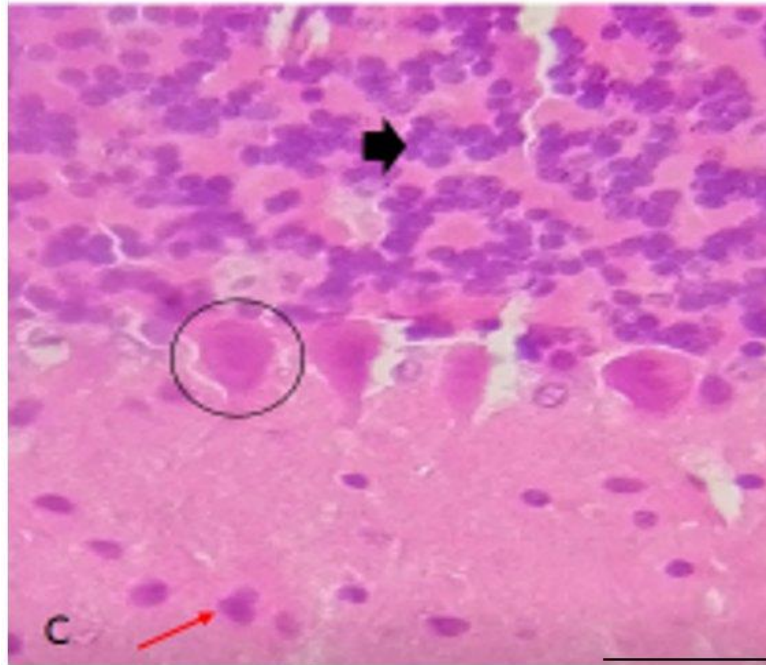


Plate 7: Treated with *A. Indica* only shows differentiated pyramidal cells(black circle) on the purkinje layer, glia cells(black thick arrow) on the granular layer and neuronal cells on the molecular layer(red thin arrow) Staining techniques: hematoxylin and eosin, Magnification: $\times 400$, Scale Bar = $120\mu\text{m}$

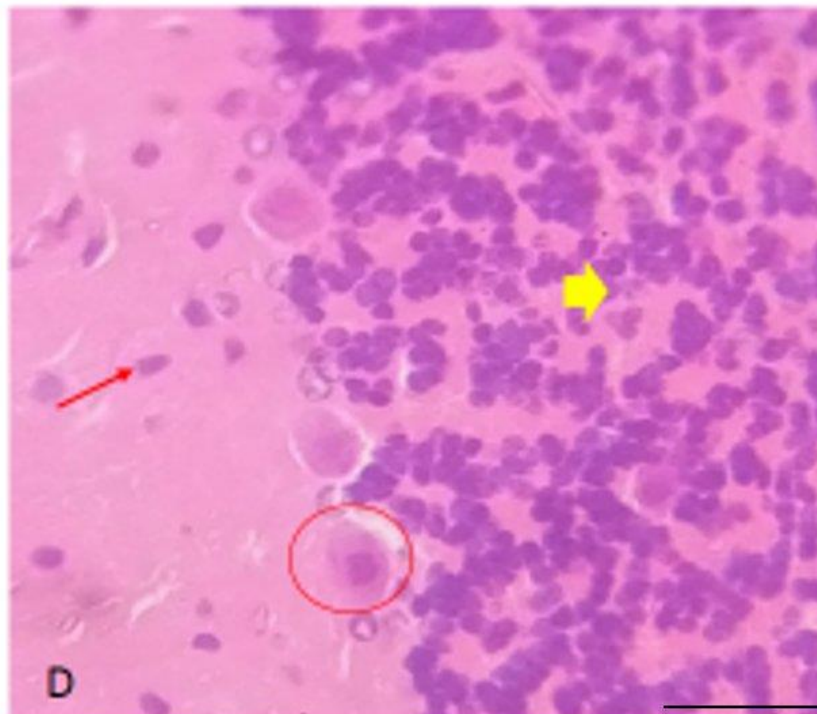


Plate 8: Induced and treated with lead acetate and *A. Indica* shows regenerated cerebellum tissue with scanty pyramidal cells(red circle), well distributed glia cells on the granular layer(yellow thick arrow), and neuronal cells(red thin arrow). Staining techniques: hematoxylin and eosin, Magnification: $\times 400$, Scale Bar = $120\mu\text{m}$

IV. Discussion

Lead is a heavy metal that is widely distributed in the environment and can cause various health problems in humans and animals. One of the mechanisms by which lead exerts its toxic effects is through the induction of oxidative stress(23). Oxidative stress is a condition in which there is an imbalance between the production of reactive oxygen species (ROS) and the antioxidant defense system, leading to cellular damage. Superoxide dismutase (SOD) and catalase (CAT) are two important antioxidant enzymes that play a crucial role in protecting cells from oxidative damage(16). Lead acetate is a toxic compound that can cause oxidative stress in various tissues and organs. A study conducted on rats showed that lead acetate increased oxidative stress in the bronchoalveolar lavage fluid (BALF) and lung tissue of rats.(31) The study found that lead acetate caused a significant dose-dependent increase in the levels of malondialdehyde (MDA) and nitric oxide (NO) with a decrease in glutathione (GSH) level and SOD activity in the BALF and lung tissue, the results of this formentioned study also corresponds with the result of our study as there was a decrease in SOD and CAT activity in the brain tissue as in (Figure 1). The study found that lead acetate significantly increased the levels of ROS and MDA in mice, which is associated with increase in oxidative stress. Meanwhile, severe DNA damage and ultrastructure alterations were observed this also correspond with the result of our study SOD and CAT are two important antioxidant enzymes that play a crucial role in protecting cells from oxidative damage. SOD catalyzes the dismutation of superoxide anion (O_2^-) to hydrogen peroxide (H_2O_2) and oxygen (O_2). H_2O_2 is then converted to water and oxygen by CAT. SOD and CAT work together to prevent the accumulation of O_2^- and H_2O_2 , which can cause oxidative damage to cells(14).

Azadirachta Indica, commonly known as neem, has been studied for its antioxidant activity. The neem plant is a rich source of antioxidants and has been widely used in traditional medicine for the treatment and prevention of various diseases. Studies have shown that different parts of the neem plant, such as the leaves, bark, and seed oil, exhibit significant antioxidant activity(34,15). Research has demonstrated the antioxidant potential of *Azadirachta Indica* through various in vitro and in vivo studies. *A. Indica* ability to scavenge free radicals and reduce oxidative stress may contribute to its therapeutic effects seen in (figure 1).

Lactate dehydrogenase (LDH) is an enzyme that plays a crucial role in the conversion of glucose to energy in cells. It catalyzes the conversion of pyruvate to lactate, which is important in anaerobic metabolism. LDH is found in many tissues, including the heart, liver, kidneys, and skeletal muscles(20). Elevated levels of LDH in the blood can indicate tissue damage or disease (as seen in figure 2). LDH has been implicated in various pathologies, including cancer, bone loss, and immune modulation(5). Several studies have investigated the effect of lead acetate on LDH levels in different tissues. For example, a study on rats found that lead acetate increased LDH levels in the serum(12). Another study on Wistar rats found that lead acetate caused testicular tissue injury and increased LDH levels in the testicular tissue,(12) the results of the above mentioned study correspond with the results of our study as seen in Figure 2, one of the major mechanism in which lead acetate use in affecting LDH level is through the induction of oxidative stress as mentioned above. *Azadirachta Indica* is rich in bioactive compounds, with nimbin, nimbinin, nimbidin, azadirachtin, and quercetin being among the key constituents (32,33). These compounds contribute to the plant's antioxidant properties by scavenging free radicals and modulating oxidative pathways, the modulating activity exhibited by *A. Indica* leaf extrat had positive effect on the level of LDH activity as seen in Figure 2

Previous study on rats found that lead acetate caused histological alterations in the cerebellum, including neuronal degeneration, vacuolation, and gliosis. (2) Another study on albino rats found that lead acetate caused toxicity in the cerebellum, as evidenced by histological changes such as neuronal degeneration, vacuolation, and gliosis. (17) Glial cells constitute a significant proportion of the central nervous system and are integral for maintaining neural function, providing support, and participating in immune responses. Lead acetate exposure has been linked to glial cell dysfunction, leading to degeneration and hyperplasia (plate 2 and plate 6). Astrocytes, the most abundant glial cells in the brain, are particularly susceptible to the toxic effects of lead acetate.(22) Lead acetate activates microglia, initiating a pro-inflammatory response characterized by the release of cytokines and other inflammatory mediators(4). One major mechanism responsible for the changes seen in the histo-architecture of the cerebellum is Lipid peroxidation, a chain reaction that results in the degradation of lipids and the production of reactive aldehydes, which will lead to the disruption of cellular membrane. *Azadirachta Indica*'s antioxidant compounds inhibit lipid peroxidation by intercepting and terminating the free radical chain reactions. This protects cellular membranes from damage and helps maintain their structural integrity, as seen in plate 4 and 8 above.

V. Conclusion

In conclusion, the comprehensive investigation into the ameliorative effects of *Azadirachta Indica* (neem) aqueous leaf extract against lead acetate-induced damage in adult male Wistar rats reveals promising neuroprotective properties. The observed restoration of catalase and superoxide dismutase activities in the cerebellum, particularly in the combined treatment group, underscores the potential of *A. Indica* in mitigating

lead-induced oxidative stress. Furthermore, the reduction in lactate dehydrogenase levels and the increase in cerebellar weight following *A. Indica* treatment suggest not only amelioration of pathological changes but also a potential role in modulating key enzymes and protective effects against alterations in cerebellar morphology. The regeneration of cerebellar tissue and the inhibitory impact on glial degeneration and hyperplasia further highlight the therapeutic potential of *A. Indica* in countering lead-induced cerebellar pathology. These findings support the traditional use of *A. Indica* in herbal medicine and suggest its potential application in neuroprotective strategies against environmental toxin-induced damage. The antioxidant and anti-inflammatory properties attributed to *A. Indica*'s active constituents, such as nimbidin and nimbin, present a promising avenue for future research and the development of therapeutic interventions. Overall, this study provides valuable insights into the multifaceted ameliorative effects of *A. Indica* against lead-induced neurotoxicity, laying the groundwork for further exploration of its therapeutic potential in neurological disorders associated with oxidative stress and environmental toxin exposure.

Acknowledgement

The authors of this Research would like to thank the Research Unit, Department of Anatomy Faculty of Basic Medical Science Olabisi Onabanjo University Ago-iwoye Ogun State for providing and enabling environment for the research, the Laboratory Scientist and Mr. George who helped with the Statistical analysis

Declaration of Competing Interest

The authors declare that they have no competing financial interest or personal relationships that could have appeared to influence the work reported in this paper.

REFERENCES

- [1]. Ahmad, I., Mehmood, Z., & Mohammad, F. (1998). Screening of some Indian medicinal plants for their antimicrobial properties. *Journal of ethnopharmacology*, 62(2), 183-193.
- [2]. Alfwuaires, M., Algefare, A. I., Mahmoud, O., & Sedky, A. (2023). Protective potential of apigenin against lead acetate induced alterations in cerebellum of rats. *Indian Journal of Animal Research*, 57(1), 96-101.
- [3]. Arumugam, A., Agullo, P., Boopalan, T., Nandy, S., Lopez, R., Gutierrez, C., ... & Rajkumar, L. (2014). Neem leaf extract inhibits mammary carcinogenesis by altering cell proliferation, apoptosis, and angiogenesis. *Cancer biology & therapy*, 15(1), 26-34
- [4]. Borst, K., Dumas, A. A., & Prinz, M. (2021). Microglia: Immune and non-immune functions. *Immunity*, 54(10), 2194-2208.
- [5]. Claps, G., Faouzi, S., Quidville, V., Chehade, F., Shen, S., Vagner, S., & Robert, C. (2022). The multiple roles of LDH in cancer. *Nature Reviews Clinical Oncology*, 19(12), 749-762.
- [6]. Efferth, T., & Koch, E. (2011). Complex interactions between phytochemicals. The multi-target therapeutic concept of phytotherapy. *Current drug targets*, 12(1), 122-132.
- [7]. Gupta, S. C., Prasad, S., Tyagi, A. K., Kunnumakara, A. B., & Aggarwal, B. B. (2017). Neem (*Azadirachta indica*): An indian traditional panacea with modern molecular basis. *Phytomedicine*, 34, 14-20.
- [8]. El-Beltagi HES, Salama ZA, El-Hariri DM. Some biochemical markers for evaluation of flax cultivars under salt stress conditions. *J Nat Fiber*. 2008;5(4):316-330.
- [9]. Erhirhie, E. O., Ekene, N. E., & Ajaghaku, D. L. (2014). Guidelines on dosage calculation and stock solution preparation in experimental animals' studies. *Journal of Natural Sciences Research*, 4(18), 100-106.
- [10]. Foyer CH, Noctor G. Oxygen processing in photosynthesis: regulation and signaling. *New Phytol*. 2002;146:359-388.
- [11]. Gupta, A. K. (2017). Use of neem and neem based products in organic farming. *Indian Farming*, 72(1).
- [12]. Heyman, L., Hourri-Haddad, Y., Heyman, S. N., Ginsburg, I., Gleitman, Y., & Feuerstein, O. (2017). Combined antioxidant effects of Neem extract, bacteria, red blood cells and Lysozyme: possible relation to periodontal disease. *BMC complementary and alternative medicine*, 17, 1-8.
- [13]. Hong-ya, F. (2014). Effect of soybean isoflavone on testicular tissue injury induced by lead acetate in mice.
- [14]. Ibrahim, N. M., Eweis, E. A., El-Beltagi, H. S., & Abdel-Mobdy, Y. E. (2012). Effect of lead acetate toxicity on experimental male albino rat. *Asian Pacific journal of tropical biomedicine*, 2(1), 41-46. [https://doi.org/10.1016/S2221-1691\(11\)60187-1](https://doi.org/10.1016/S2221-1691(11)60187-1)
- [15]. Ighodaro, O. M., & Akinloye, O. A. (2018). First line defence antioxidants-superoxide dismutase (SOD), catalase (CAT) and glutathione peroxidase (GPX): Their fundamental role in the entire antioxidant defence grid. *Alexandria journal of medicine*, 54(4), 287-293.
- [16]. Iman, M., Taheri, M., & Bahari, Z. (2021). The anti-cancer properties of neem (*Azadirachta Indica*) through its antioxidant activity in the liver: its pharmaceuticals and toxic dosage forms. A literature review. *Journal of Complementary and Integrative Medicine*, 19(2), 203-211.
- [17]. Incalza, M. A., D'Oria, R., Natalicchio, A., Perrini, S., Laviola, L., & Giorgino, F. (2018). Oxidative stress and reactive oxygen species in endothelial dysfunction associated with cardiovascular and metabolic diseases. *Vascular pharmacology*, 100, 1-19.
- [18]. Isaac, U.E. (2020). Ameliorative Effect of Administering Avocado (*Persea americana*) Leaf Extract on Lead Acetate Toxicity in the Brain-cerebellum of Albino Rats.
- [19]. Islas, J. F., Acosta, E., Zuca, G., Delgado-Gallegos, J. L., Moreno-Treviño, M. G., Escalante, B., & Moreno-Cuevas, J. E. (2020). An overview of Neem (*Azadirachta Indica*) and its potential impact on health. *Journal of Functional Foods*, 74, 104171.
- [20]. Jingfa Wang, Jian Li, Jiankang CaO and Weibo Jiang (2010). Antifungal activities of neem (*Azadirachta Indica*) seed kernel extracts on post harvest diseases in fruits. *African journal of microbiology Research* vol. 4 (11) Pp. 1100-1104.
- [21]. Khan, A. A., Allemaille, K. S., Alhumaydhi, F. A., Gowder, S. J., & Rahmani, A. H. (2020). The biochemical and clinical perspectives of lactate dehydrogenase: an enzyme of active metabolism. *Endocrine, Metabolic & Immune Disorders-Drug Targets (Formerly Current Drug Targets-Immune, Endocrine & Metabolic Disorders)*, 20(6), 855-868.
- [22]. Malecka A, Jarmuszkiwicz W, Tomaszewska B. Antioxidative defense to lead stress in sub cellular compartments of pea root cells. *Acta Biochim Pol*. 2001;48:687-698.
- [23]. Mani, M. S., Joshi, M. B., Shetty, R. R., DSouza, V. L., Swathi, M., Kabekkodu, S. P., & Dsouza, H. S. (2020). Lead exposure induces metabolic reprogramming in rat models. *Toxicology Letters*, 335, 11-27.

- [23]. Matović, V., Buha, A., Đukić-Čosić, D., & Bulat, Z. (2015). Insight into the oxidative stress induced by lead and/or cadmium in blood, liver and kidneys. *Food and Chemical Toxicology*, 78, 130-140.
- [24]. Misra, H. P., & Fridovich, I. (1972). The role of superoxide anion in the autoxidation of epinephrine and a simple assay for superoxide dismutase. *Journal of Biological Chemistry*, 247(10), 3170-3175.
- [25]. Mohammadali M. Shoja, Rebecca Ramdhan, Chad J Jensen, Joshua J Chern, W Jerry Oakes, R Shane Tubbs(2018). *Clinical Anatomy* 31 (4), 488-500.
- [26]. Naik, M. R., Bhattacharya, A., Behera, R., Agrawal, D., Dehury, S., & Kumar, S. (2014). Study of anti-inflammatory effect of neem seed oil (*Azadirachta indica*) on infected albino rats. *Journal of Health Research and Reviews*, 1(3), 66.
- [27]. Omóbòwálé, T. O., Oyagbemi, A. A., Adejumobi, O. A., Orherhe, E. V., Amid, A. S., Adedapo, A. A., ... & Yakubu, M. A. (2016). Preconditioning with *Azadirachta indica* ameliorates cardiorenal dysfunction through reduction in oxidative stress and extracellular signal regulated protein kinase signalling. *Journal of Ayurveda and Integrative Medicine*, 7(4), 209-217.
- [28]. Omprakash S (2014). *Azadirachta Indica* leaves as antibacterial on regular fabric. *Journal of Medical Sciences and Public Health* vol. 3, No.2 92014), 25-33. ISSN: 2331-5199
- [29]. Patel, S. M., Venkata, K. C. N., Bhattacharyya, P., Sethi, G., & Bishayee, A. (2016, October). Potential of neem (*Azadirachta indica* L.) for prevention and treatment of oncologic diseases. In *Seminars in cancer biology* (Vol. 40, pp. 100-115). Academic Press.
- [30]. Ponnusamy, S., Haldar, S., Mulani, F., Zinjarde, S., Thulasiram, H., & RaviKumar, A. (2015). Gedunin and azadiradione: human pancreatic alpha-amylase inhibiting limonoids from neem (*Azadirachta indica*) as anti-diabetic agents. *PloS one*, 10(10), e0140113.
- [31]. Samarghandian, S., Borji, A., Afshari, R., Delkosh, M. B., & Gholami, A. (2013). The effect of lead acetate on oxidative stress and antioxidant status in rat bronchoalveolar lavage fluid and lung tissue. *Toxicology mechanisms and methods*, 23(6), 432-436.
- [32]. Sarah, R., Tabassum, B., Idrees, N., & Hussain, M. K. (2019). Bio-active compounds isolated from neem tree and their applications. *Natural Bio-active Compounds: Volume 1: Production and Applications*, 509-528.
- [33]. Sarkar, S., Singh, R. P., & Bhattacharya, G. (2021). Exploring the role of *Azadirachta Indica* (neem) and its active compounds in the regulation of biological pathways: an update on molecular approach. *3 Biotech*, 11(4), 178.
- [34]. Shori, A. B., & Baba, A. S. (2013). Antioxidant activity and inhibition of key enzymes linked to type-2 diabetes and hypertension by *Azadirachta Indica*-yogurt. *Journal of Saudi Chemical Society*, 17(3), 295-301.
- [35]. Sgaier SK, Millet S, Villanueva MP, Berenshteyn F, Song C, Joyner AL. Morphogenetic and cellular movements that shape the mouse cerebellum: insights from genetic fate mapping. *Neuron*. 2005; 45: 27–40.
- [36]. Shilpa, G., Renjitha, J., Saranga, R., Sajin, F. K., Nair, M. S., Joy, B., ... & Priya, S. (2017). Epoxyazadiradione purified from the *Azadirachta indica* seed induced mitochondrial apoptosis and inhibition of NFκB nuclear translocation in human cervical cancer cells. *Phytotherapy Research*, 31(12), 1892-1902.
- [37]. Sinha, A. K. (1972). Colorimetric assay of catalase. *Analytical biochemistry*, 47(2), 389-394.
- [38]. Subapriya R. and Nagiri S(2005). *Current medicinal chemistry anticancer agents* 5(2)149-156
- [39]. Vardhan, S., & Sahoo, S. K. (2020). In silico ADMET and molecular docking study on searching potential inhibitors from limonoids and triterpenoids for COVID-19. *Computers in biology and medicine*, 124, 103936.
- [40]. Xienia U, Foote GC, Van S, Devreotes PN, Alexander S, Alexander H. Differential developmental expression and cell type specificity of *Dictyostelium* catalases and their response to oxidative stress and UV light. *Biochim Biophys Acta*. 2000;1492:295–310.
- [41]. Yang, F., & Massey, I. Y. (2019). Exposure routes and health effects of heavy metals on children. *Biometals*, 32(4), 563-573.
- [42]. Zong, A., Cao, H., & Wang, F. (2012). Anticancer polysaccharides from natural resources: A review of recent research. *Carbohydrate polymers*, 90(4), 1395-1410.