



Geochemical Assessment of Soil in Dumpsites Around Tombia-Amassoma Road, Western Niger Delta.

1. Okumoko Dokumo Pearce

*Department of Earth Sciences,
Federal University of Petroleum Resources Effurun*

2. Izeze Elijah Ovie

*Department of Earth Sciences,
Federal University of Petroleum Resources Effurun*

ABSTRACT

This research work focus on determining the urban geochemistry of soil in dumpsites around Tombia-Amassoma road, western Niger Delta. Nine (9) soil samples were randomly collected within the dumpsite vicinity and two (2) control samples were collected from a distance of about 9.0 km from the dumpsite. The samples were prepared according to standard procedures and analyzed for some heavy metals (Ag, Zn, Cu, Ni and Fe) using the Atomic Absorption Spectrophotometer at Analytical Concept Environmental Consultants Laboratory Ltd, Port Harcourt, Nigeria.. The geochemical data was subjected to multivariate statistical analysis and comparisons were made with World Health Organization standard. The results obtained showed that the mean concentrations of Ag (0.54mg/kg), Zn (33.89mg/kg), Cu (31.85mg/kg) and Ni (22.80mg/kg) were within an acceptable limit when compared with WHO standard, while Fe (6329.40mg/kg) exceeded the limits. Geo-accumulation index and contamination factor revealed that the soils around the dumpsite were moderately to heavily contaminated with Fe thereby indicating that the sediment samples are polluted. The study concluded that the soils around the Tombia-Amassoma dumpsite was contaminated with Fe and as such should be discouraged in its usage for agricultural related purposes as these highly toxic trace elements can be absorbed by plants. Therefore, a well-engineered landfill that incorporates the local geology and the topography of the area should be designed so as to prevent infiltration of heavy metals into the soil and shallow groundwater system.

Key words:*Dumpsite, Multivariate statistical analysis, Geo-accumulation index, Contamination factor, Pollution, Groundwater.*

Received 13 feb., 2023; Revised 27 Mar., 2023; Accepted 29 Mar., 2023 © The author(s) 2023.

Published with open access at www.questjournals.org

I. Introduction

The term 'Urban Geochemistry' is a unique discipline that is distinguished from general geochemistry by the complex infrastructure and intense human activities associated with concentrated population centers. As stated by Thornton (1991) "This subject is concerned with the complex interactions and relationships between chemical elements and their compounds in the urban environment, the influence of past and present human and industrial activities on these, and the impacts or effects of geochemical parameters in urban areas on plant, animal and human health." Urban areas present special challenges to geochemists attempting to understand geochemical states and fluxes. Some heavy metals include lead, chromium, arsenic, zinc, cadmium, copper, mercury and nickel. The word 'Dumpsite' means a widespread land disposal area and generally known for its common features are being exposed directly to the atmosphere or covered improperly with soil layer and

Figure 1: Map of the study area



Plate 1: The Dumpsite along Tombia-Amassoma Road.

III. Methodology

This research work involved field studies and geotechnical investigation of soil from dumpsite in Tombia-Amassoma road, Yenagoa Local Government of Bayelsa State. In this Chapter, the sampling procedures, the location of sampling points, equipments, material and methods employed in the analysis of several geochemical parameters is presented.

Material used included portable global positioning system (GPS) device (model GARMIN GPS 76 CSX), polyethylene plastic cans. Relevant maps (topographic and geological) were gotten from Federal University of Petroleum Resources, Effurun and Niger Delta University. The atomic absorption spectrophotometric (AAS GBS 908PBM model) was used for heavy metals analysis of soil samples. All analysis was done at Analytical Concept Environmental Consultants Laboratory Ltd, Port Harcourt, Rivers State – Nigeria. Softwares including ArcGIS, suffer 12, excel, SPSS were used also, multivariate statistical analysis was used for the data analysis of this research work.

Materials used for this research work varies from materials used in the field for gathering of samples to materials used in the laboratory for testing and analysis of the samples.

IV. Results and Discussions

The concentrations in mg/kg of all analyzed parameters were tabulated and compared to WHO (2009) standard as shown in table 1.

Table 1: Summarized statistics of sediment sample physical and chemical characteristics compared against WHO (2009) standards.

Parameter	Unit	Minimum	Maximum	Mean	WHO (2009)
pH		4.7	6.9	5.88	6.5
EC	µs/cm	124	503	248.31	1000
Fe	Mg/kg	5745.3	6697.0	6329.4	0.30
Zn	Mg/kg	8.96	69.02	33.89	50
Cu	Mg/kg	6.04	92.24	31.85	36
Ni	Mg/kg	2.85	94.71	22.79	35
Ag	Mg/kg	0.02	1.3	0.54	4.4

Correlation Matrix

Table 2: Pearson's Correlation Matrix showing relationship between analyzed parameters

	Ph	EC (µs/cm)	Ag (Mg/Kg)	Zn(Mg/Kg)	Cu (Mg/Kg)	Ni (Mg/Kg)	Fe (Mg/Kg)
Ph	1	0.511	0.092	0.177	0.229	-0.030	-0.045
EC (µs/cm)	0.511	1	-0.182	0.103	-0.133	-0.294	0.014
Ag (Mg/Kg)	0.092	-0.182	1	0.788	0.698	0.381	0.967
Zn(Mg/Kg)	0.177	0.103	0.788	1	0.602	0.381	0.967
Cu (Mg/Kg)	0.229	-0.133	0.698	0.602	1	0.381	0.967
Ni (Mg/Kg)	-0.030	-0.294	0.381	0.381	0.381	1	0.967
Fe (Mg/Kg)	-0.045	0.014	0.967	0.967	0.967	0.967	1

Ag (Mg/Kg)	0.092	-0.182	1	.853**	.875**	.832**	-0.195
	0.788	0.592		0.001	0.000	0.001	0.565
	11	11	11	11	11	11	11
Zn(Mg/Kg)	0.177	0.103	.853**	1	.933**	.770**	-0.390
	0.602	0.764	0.001		0.000	0.006	0.236
	11	11	11	11	11	11	11
Cu (Mg/Kg)	0.229	-0.133	.875**	.933**	1	.782**	-0.380
	0.499	0.698	0.000	0.000		0.004	0.249
	11	11	11	11	11	11	11
Ni (Mg/Kg)	-0.030	-0.294	.832**	.770**	.782**	1	-0.116
	0.930	0.381	0.001	0.006	0.004		0.734
	11	11	11	11	11	11	11
Fe (Mg/Kg)	-0.045	0.014	-0.195	-0.390	-0.380	-0.116	1
	0.894	0.967	0.565	0.236	0.249	0.734	
	11	11	11	11	11	11	11

** Correlations above 0.5 indicate significant positive correlation.

V. Discussion and Findings

The results of physicochemical parameters measured were compared to the WHO (2009) standards and are displayed in the figures below.

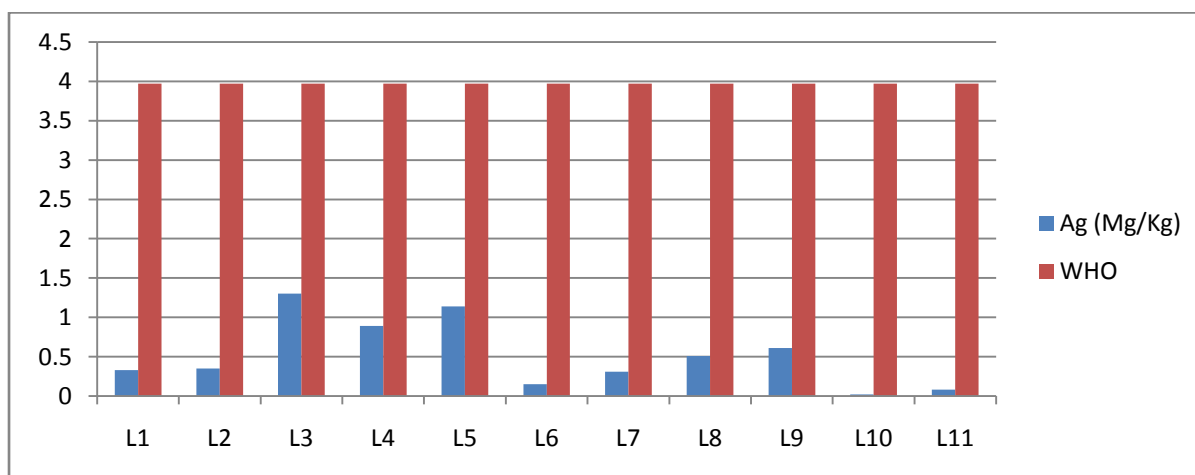


Figure 2: Showing comparison between Ag to WHO 2009 standard

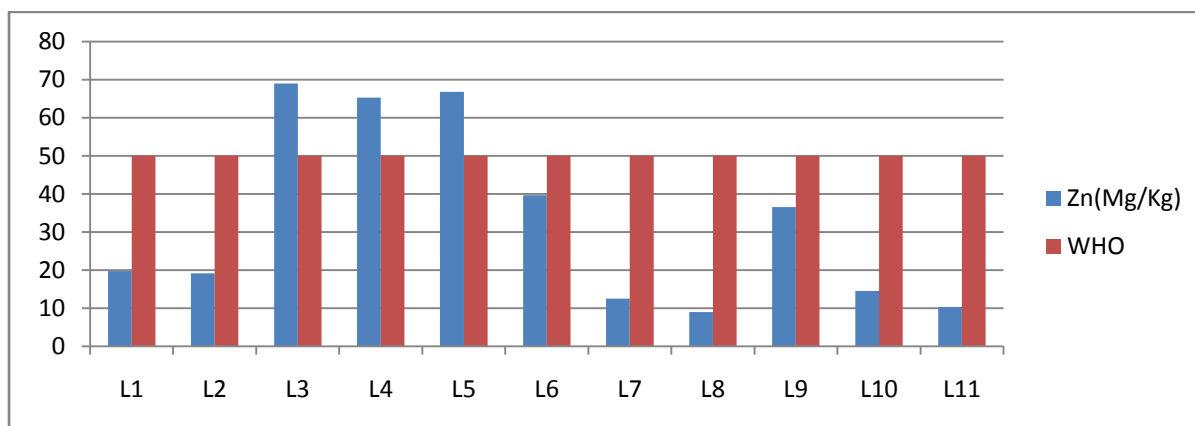


Figure 3: Showing comparison between Zn to WHO 2009 standard

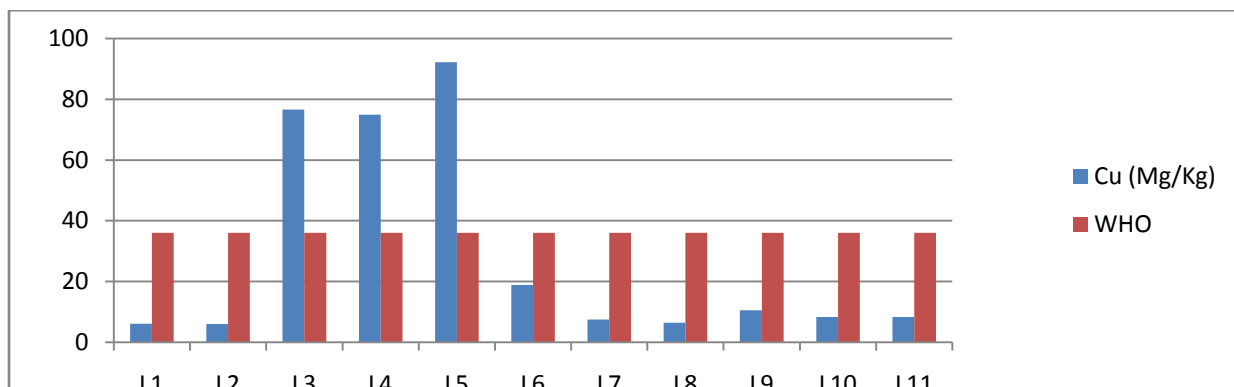


Figure 4: Showing comparison between Cu to WHO 2009 standard

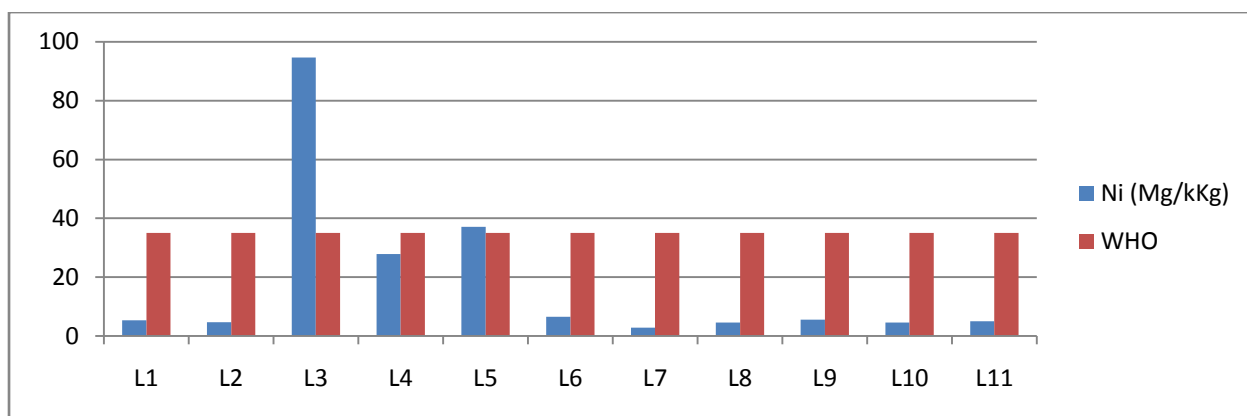


Figure 5: Showing comparison between Ni to WHO 2009 standard

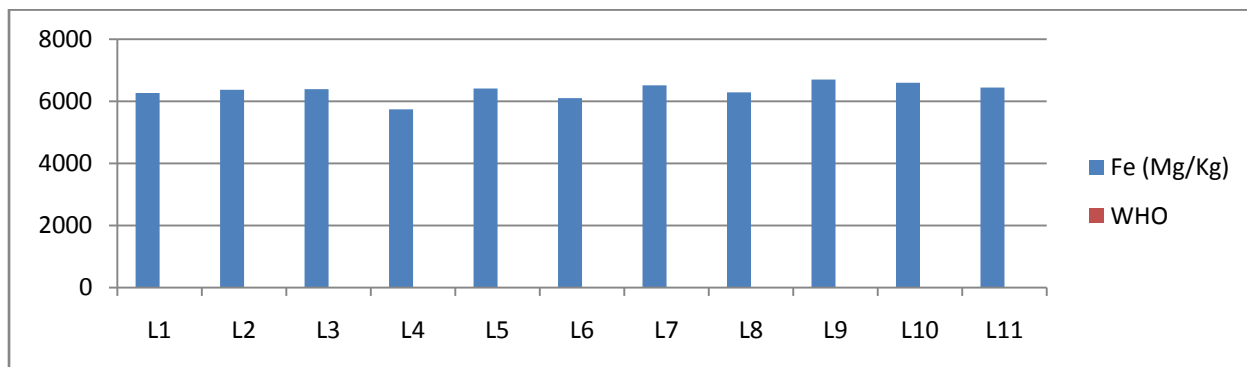


Figure 6: Showing comparison between Fe to WHO 2009 standard

Correlation Matrix

Pearson's correlation matrix (Table 3) shows the relationship between the parameters. Only correlation coefficients above 0.5 were chosen since these indicate very high positive correlation. Correlations such as those indicated in the table suggest that the presence of one of them in the study area depends on the other and that they both are likely to have the same source as being responsible for their presence in the study area. For example, an increase in pH (increase towards basicity) would result in an increase in bicarbonate concentration and a decrease in pH will result in a decrease in bicarbonate concentration.

Enrichment Factor (EF)

The calculated results of EF of heavy metals in the sediment investigated for each sample from location 1 to location 11 using iron (Fe) as a reference point for this study shows that the area has a minor enrichment.

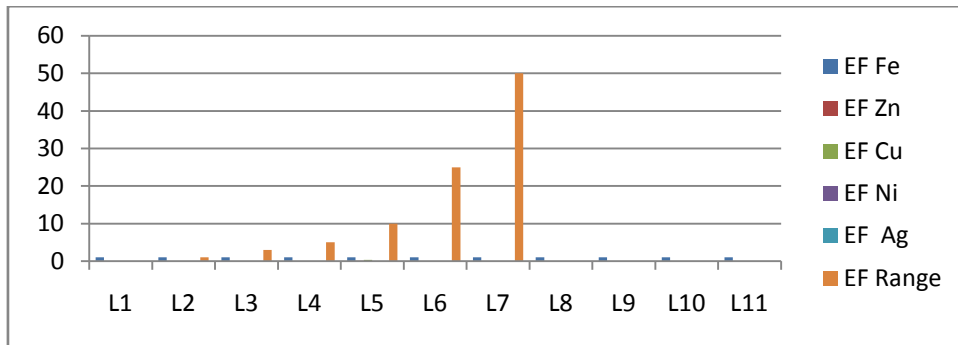


Figure 7: A graphical representation showing the minor enrichment in the heavy metals within the study area.

Geo-accumulation Index (I-GEO)

The calculated results of Igeo of heavy metals in the sediment investigated for each sample taking Iron (Fe) as a reference point from location 1 to location 11 shows moderately to heavily contaminated by (3.02)

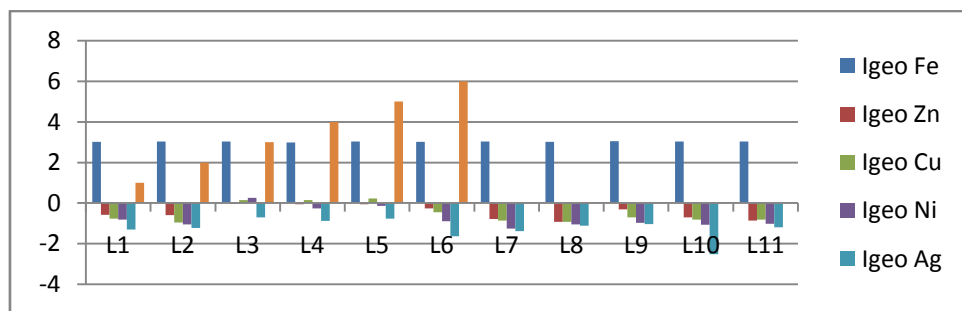


Figure 8: A graphical representation showing that the study area has moderate to heavy Fe contamination.

Pollution Load Index (PLI)

Pollution severity and its variation along the different locations were determined with the use of pollution load index. This index is a quick tool in order to compare the pollution status of different places. The PLI as calculated in table ranges from 0.58 to 5.18 with PLI average of 2.13 which is >1 thereby indicating that the sediment samples are polluted.

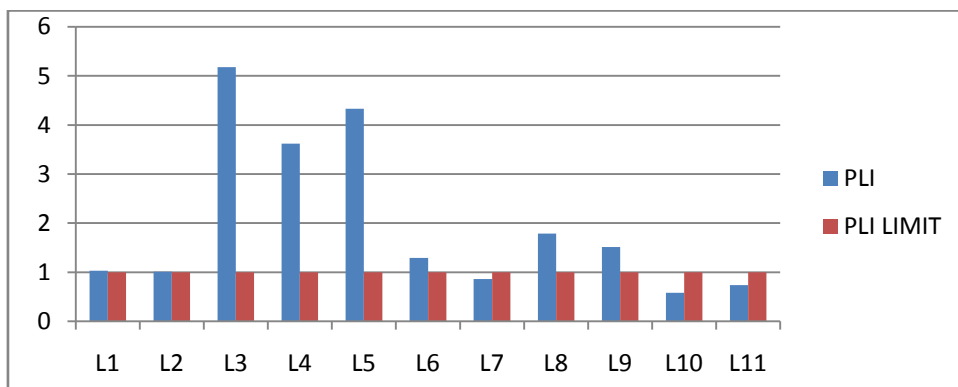


Figure 9: Showing the presence of heavy metal pollution in the study area.

Contamination Factor (CF)

Result from Table 7 shows the Contamination Factor of all the metals; silver ranging from 0.0045 to 0.29 with mean of 0.12, Zinc ranges from 0.21 to 1.79 with mean of 0.84, copper ranges from 0.17 to 2.56 with mean of 0.88, nickel ranges from 0.08 to 2.71 with mean of 0.65 and iron ranging from 1447.2 to 1686.9. The table proposed by Bonnail et al., (2016) states if the values are ≤ 1 it shows low or no CF. The values of the contamination from the metals from location 1 to location 11 shows that there is contamination factor of the metals using Iron (Fe) as a reference point which is > 1 .

Fractional Distribution of Heavy Metals and Possible Impact on Soil of the Study Area

Figures 12-16 below show the fractional distribution for the five different heavy metals in accordance to sample locations in the study area;

1. Silver (Ag)

The distribution of Ag in the study area was highly contaminated around Location 3 and Location 5 ranging from (1.14 -1.30mg/kg) and the rest of the area was fairly contaminated ranging from (0.02-0.89mg/kg).

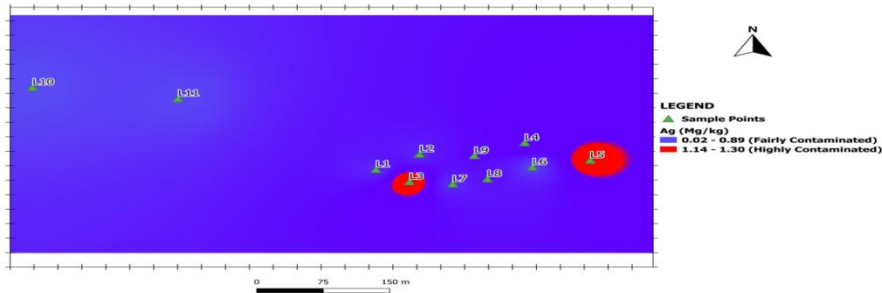


Figure 10: Spatial Distribution Map of Silver (Ag) in the Study Area

2. Copper (Cu)

The distribution of Cu in the study area was highly contaminated around Location 3, Location 4 and Location 5 ranging from (70.94-92.24mg/kg) and the rest of the area was fairly contaminated ranging from (6.04-18.84mg/kg).

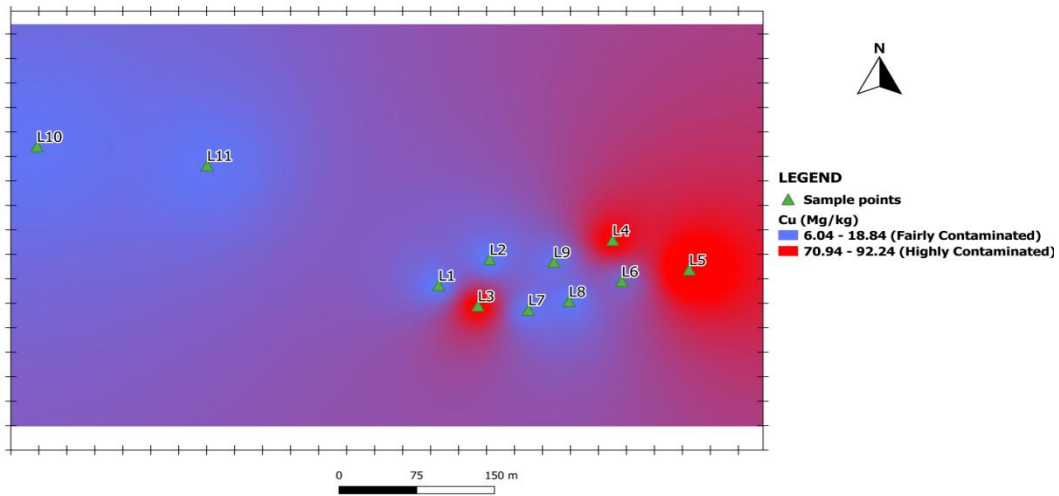


Figure 11: Spatial Distribution Map of Copper (Cu) in the Study Area

3. Zinc (Zn)

The distribution of Zn in the study area was highly contaminated around Location 3, Location 4 and Location 5 ranging from (65.32-69.02mg/kg) and the rest of the area was ranging from moderate (36.57-39.64mg/kg) to fairly contaminated (8.96-19.74mg/kg).

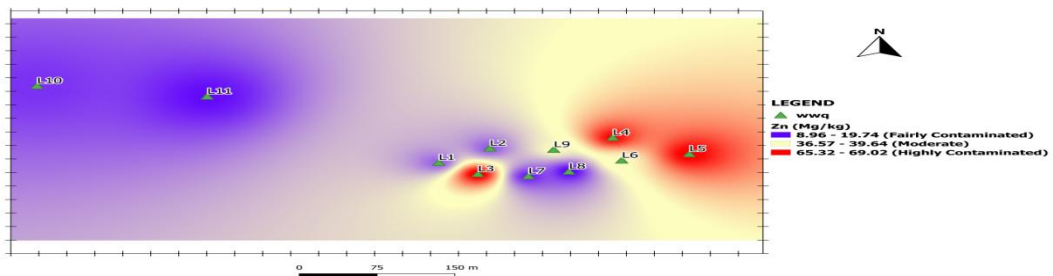


Figure 12: Spatial Distribution Map of Zinc (Zn) in the Study Area

4. Nickel (Ni)

The distribution of Ni in the study area was highly contaminated around Location 3 with the value (94.71mg/kg) and the rest of the area was ranging from moderate (27.89-37.06mg/kg) to fairly contaminated ranging from (2.85-6.56mg/kg).

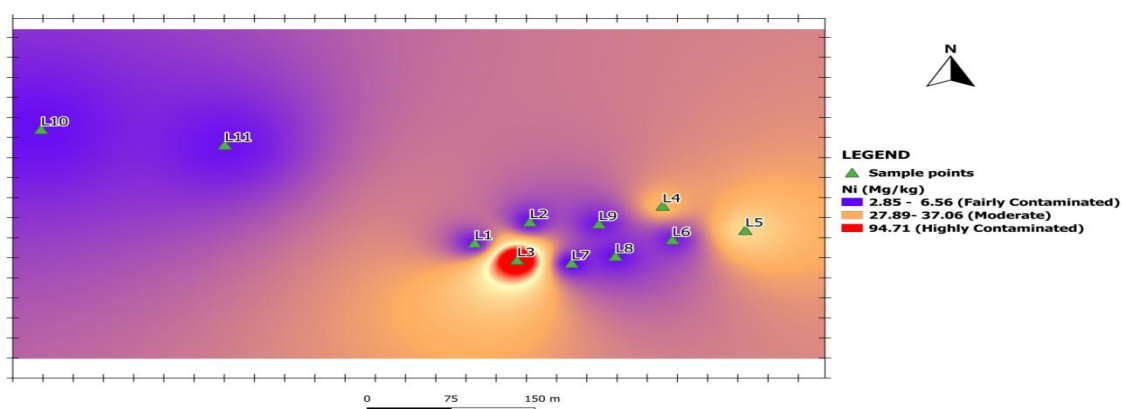


Figure 13: Spatial Distribution Map of Nickel (Ni) in the Study Area

5. Iron (Fe)

The distribution of Fe in the study area was highly contaminated all Locations ranging from (6517-6697mg/kg) except from Location 4 with concentration value of (5745.3).

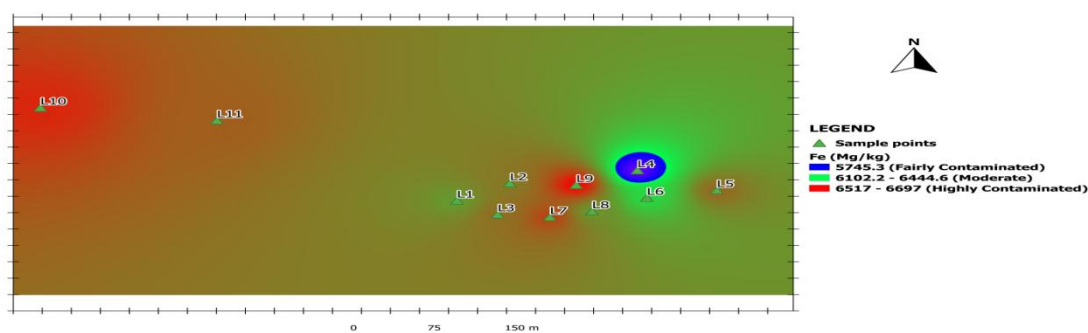


Figure 14: Spatial Distribution Map of Iron (Fe) in the Study Area

VI. Conclusion

The geochemical analytical data of the soil samples revealed that the Tombia-Amassoma dumpsite and its environs had higher heavy metal concentrations when compared with the control sample that is about 9.0 km away from the site. This may be connected with the dumping of inorganic waste materials in the dumpsite. The result also revealed the following trend in their order of geo-accumulation in the soil: Fe > Zn > Cu > Ni > Ag. Contamination factor (CF) and geo-accumulation (I_{geo}) index further geo confirmed that the soil from the dumpsite was moderately contaminated with Fe, and presently uncontaminated with Zn, Cu, Ag and Ni. The Pollution Load Index described the study area as being polluted at the time of the study and hence remediation measures are required.

References

- [1]. Abdus-Salam, N., Ibrahim, S., Fatoyinbo, T. (2011). "Dumpsite in Lokoja, Nigeria: A Silent Pollution Zone for Underground Water." *Waste Management and Bioresource Technology* 1, 21-30
- [2]. Ali, H., & Khan, E. (2018). "Bioaccumulation of non-essential hazardous heavy metals and metalloids in freshwater fish. Risk to human health." *Environmental Chemistry Letters* 16(3): 903-917.
- [3]. Alimba, C., Bakare, A., and Latunji, C. (2006). "Municipal Landfill Leachates Induced Chromosome Aberrations in Rat Bone Marrow Cells." *Cell Biology and Genetics Unit, Department of Zoology, University of Ibadan, Nigeria.*
- [4]. Alloway, J. (1995). "Heavy Metals in Soils: Trace Metals and Metalloids in Soils and their Bioavailability." *Environmental Pollution*. 22(3).
- [5]. Anikwe, M. and Nwobodo, K. (2002). "Long Term Effect of Municipal Waste Disposal on Soil Properties and Productivity of Sites used for Urban Agriculture in Abakaliki, Nigeria." *Department of Agronomy, Faculty of Agriculture, Enugu State University of Science and Technology, P.M.B. 01660 Enugu, Nigeria.*
- [6]. Ansari, A., Singh, B., Tobschall, H (2002). Status of Anthropogenically Induced Metal Pollution in the Kanpur-Unnao Industrial Region of the Ganga Plain India. *Environ Geol.* 38, 25-33.

- [7]. Barlas, A., Rooker, P., Kjeldsen, P., Gabr, A., & Borden, R. (2002). "Critical evaluation of factors required to terminate the post closure monitoring period at solid waste landfills," *Environmental Science & Technology*, 36, 3457–3464.
- [8]. Bayelsa State Conflict Bulletin (2012): Conflict Bulletin: Bayelsa State – Patterns and Trends <http://t.co/5k76RtdGwG>
- [9]. Bellebaum, J. (2005). Flock Composition and inter specific dominance in Black –Headed Gulls and Herring Gulls wintering at an Inland Refuse Dump in Germany. *Ornis Fennica* 82(4): 166-171.
- [10]. Colin, L. Villegas, B. and Abate, M. (2012). "Indigenous microorganisms as potential bioremediators for environments contaminated with heavy metals," *International Biodeterioration & Biodegradation*, 69, 28–37.
- [11]. Duffus, H. (2002). Heavy metals—A meaningless term? *Pure and Applied Chemistry*; Vol. 74(5): 793-807
- [12]. Faiz, Y., Tufail, M., Javed, M., Chaudhry, M. and Naila-Siddiqu. (2009). Road Dust Pollution of Cd, Cu, Ni, Pb and Zn along Islamabad Expressway, Pakistan. *Microchemical Journal* 92(2): 186-192.
- [13]. Kim, Y., Lee, D. (2009). "Comparative study on leachate in closed landfill sites: focusing on seasonal variations," *Journal of Material Cycles and Waste Management*, vol. 11, no. 3, pp. 174–182.
- [14]. Ngole-Jeme V. & Babalola, O. (2020). "Heavy metal immobilization potential of indigenous bacteria isolated from Gold mine tailings," *International Journal of Environmental Research*, 14, 71–86.
- [15]. Nwankwoala, O., Youdeowei, P. & Ngah, S. (2009). Expanding Hydro-geotechnical Considerations in Environmental Impact Assessment Studies: A Case Study of OgorodeSapele, Delta State, Nigeria. *J. Appl. Sci. Environ. Mgt.* 13(1):67-71
- [16]. Okiongbo, K., Douglas, R. (2013). Evaluation of Major Factors Influencing the Geochemistry of Groundwater using Graphical and Multivariate Statistical Methods in Yenagoa City, Southern Nigeria. *Applied Water Science*. ISSN 2190-5487, 5(1): 27-37.
- [17]. Pearson, R. (1970). **Petroleum and the Nigerian Economy**. **Stanford: Stanford University Press, 13.**
- [18]. Reijers, T. (2011). Stratigraphy and Sedimentology of the Niger Delta. *Geologos* 17(3): 133-162
- [19]. Robinson, T. (2018). Removal of Dissolved Methane and Other Contaminants from Landfill Leachate in Engineered Wetlands.
- [20]. Salminen, P. (2008). Ecologically neglected tannins and their biologically relevant activity: chemical structures of plant ellagitannins reveal their in vitro oxidative activity at high pH. *Chemoecology*. 18, 78-83
- [21]. Shemdoe, R. (2010). "Heavy metal concentrations in soils and leachates of Mtoni dumpsite bordering the Indian Ocean in Dar es Salaam," *Tanzania Scientific Research and Essays*, 5, 2143–2147,
- [22]. Smith, A., Rita, F. & David, P. (2001). Survey Protocol for Assessment of Endangered Freshwater Mussels in the Allegheny River, Pennsylvania. *J.N. Am. Benthol. Soc.*, 20(1): 118-132.
- [23]. Thornton, I. (1991). Metal Contamination of Soils in Urban Areas. In: Bullock, P and Gregory, P.J., Eds., *Soils in the Urban Environment*, Blackwell, Oxford, 47-75. <http://dx.doi.org/10.1002/9781444310603.ch4>
- [24]. Vaverková M. & Adamcová, D. (2014). "Heavy metals uptake by select plant species in the landfill area of Štěpánovice," *Czech Republic Polish Journal of Environmental Studies*, 23, 2265–2269.
- [25]. WHO/FAO/IAEA (2009). Trace Elements in Human Nutrition and Health. Switzerland: Geneva: World Health Organization.
- [26]. Wilcke, W., Kretzschmar, S., Bundt, M., Zech, W. (1998). Metal Concentration in Aggregates Interiors, Exteriors, Whole Aggregates, and Bulk of Costa Rican Soils. *Soil Sci.* 163: 463-371.
- [27]. Wuana, A., Okieimen, E. (2011). Heavy Metals in Contaminated Soils: A Review of Sources, Chemistry, Risks and Best Available Strategies for Remediation. *International Scholarly Research Notices*. <http://doi.org/10.5402/2011/402647>
- [28]. Yidana, M. (2008). A Simulation/Optimization Model for Groundwater Resources Management in the Afram Plains Area, Ghana. *Journal of Environmental Hydrology*. 16:1-14
- [29]. Zhang, J. (2007). Predicting Total and Component Biomass of Chinese Fir Using a Forecast Combination Method. *Biogeosciences and Forestry*. 10, 687-691.